



SQnet+

Quality process manager
for production line





SQnet+

Quality process manager for production line



Local PC database



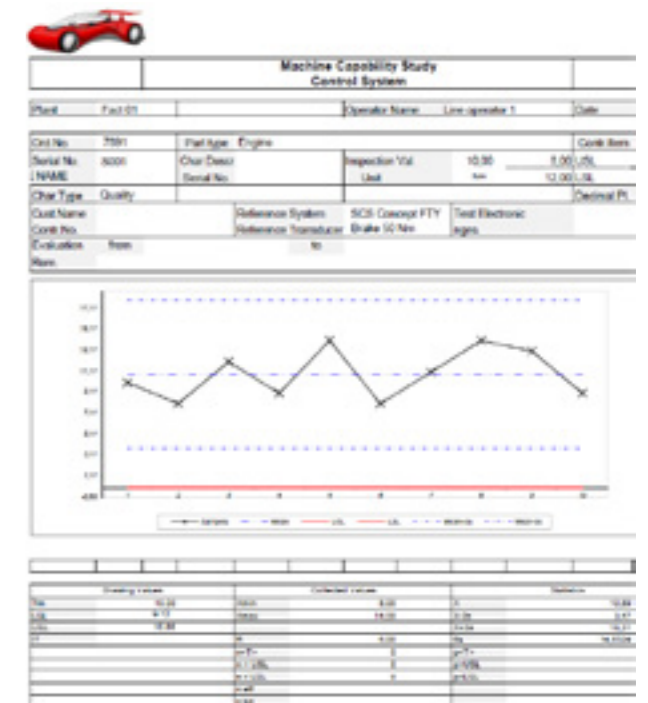
Local bench database



Network database



Customized reports



Tools Test

- 1 or 2 steps tool
- Pulse tool
- Click wrench
- Dial wrench
- ISO 6789
- ISO 5393

Miscellaneous

- User management
- Tools archives
- Joint archive
- Test scheduling
- Route of tests for control instruments
- Data traceability with VIN management

Quality Control

- Smart Breakaway
- Breakaway angle
- Breakaway peak
- Loosen/Tighten
- Minimum torque
- Loose torque

Benefits

- Production line quality improvement
- Reports and statistics
- Structured data and traceability
- Connectivity with all SCS reporting capable products
- Custom functions per customer need

Statistics

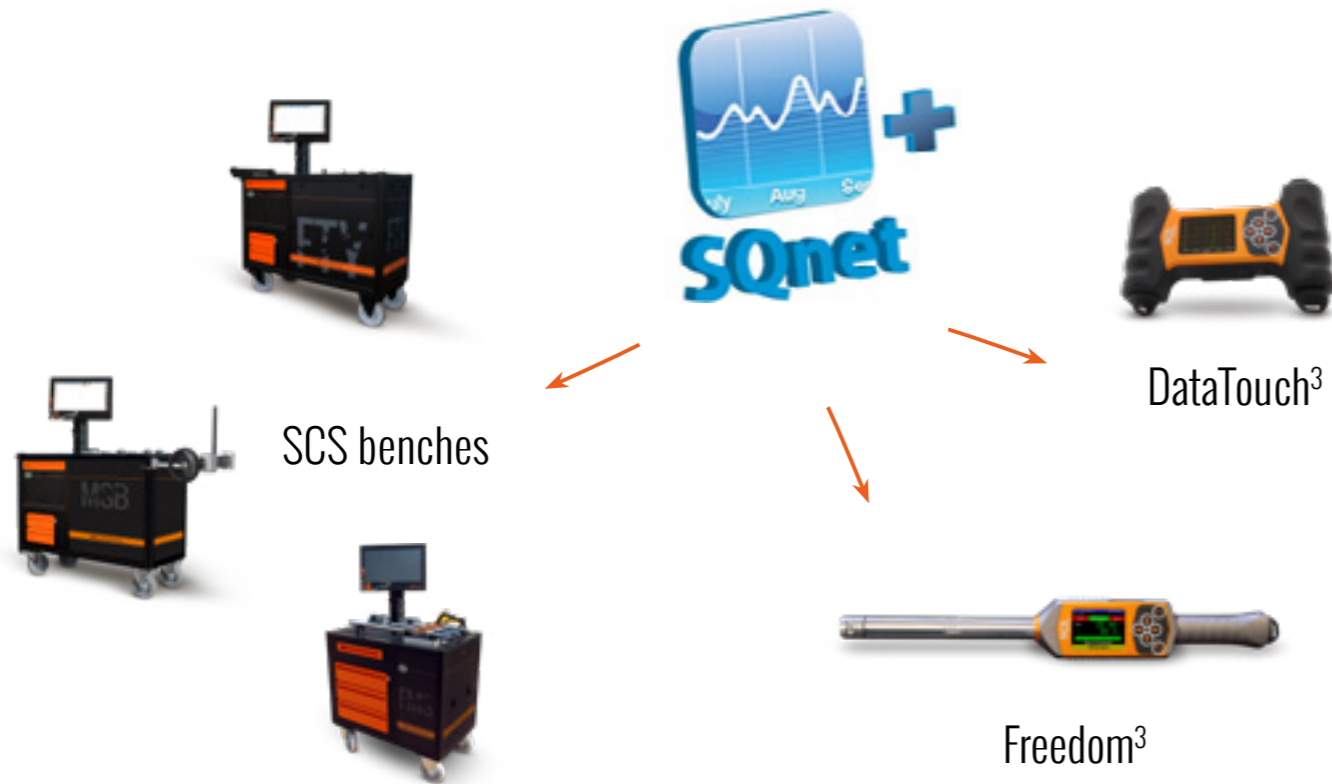
- Statistic process control
- Cm-Cmk and X/R charts
- Cp-Cpk and X/R charts
- Global traces composition
- Customized reports
- Export to Excel

➤ Customizable functions on customer needs

➤ Compared test definitions and reports

Control Instruments

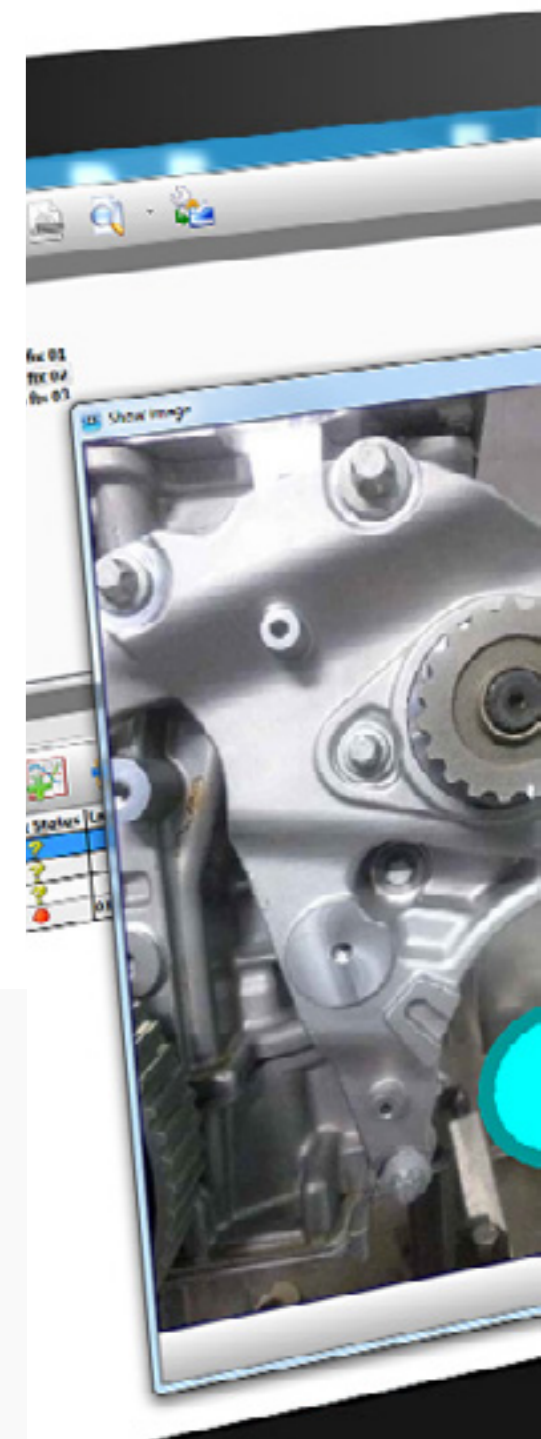
- SCS Instruments Programming



Power tools and Wrenches Management

- Tools archive
- Test definition
- Test scheduling
- Cm-Cmk and X, R charts

Check status	Last check	Next check	Cm/Cp
●	06/06/2013...	26/06/2014	8.14
●	06/06/2013...	26/06/2014	1.1
●	06/06/2013...	26/06/2014	1.1
●	06/06/2013...	26/06/2014	1.1
●	13/06/2013...	27/06/2014	1.1
●	29/06/2013...	04/06/2014	1.1
●	29/06/2013...	27/06/2014	1.1
●	29/06/2013...	04/06/2014	1.1
●	06/06/2013...	26/06/2014	1.1
●	06/06/2013...	26/06/2014	1.1
●	06/06/2013...	26/06/2014	1.1



Operations (joints) Management

- Operations archive
- Residual torque test definition
- Test scheduling
- Cp-Cpk and X, R charts

The screenshot shows a hierarchical tree view of operations and joints. The tree structure is as follows:

- Plant 1
 - Line 1
 - Station 1
 - Joint 1 <001> / Chassis fix 01
 - Joint 2 <004> / Chassis fix 02
 - Joint 3 <004> / Chassis fix 03
 - Joint 4 <002> / Bell fix
 - Station 2
 - Joint 5 <001> / Filter
 - Station 3
 - Joint 60 <001> / Gear
 - Line 2
 - Line 3



Analysis

- Results, Traces, Statistics

